

Take time for you this summer

After a long, hot day, what could be more inviting for parents and kids than coming home to your own pool? It's a whole new world of family time and relaxation in the comfort of your own backyard. Cornelius® leads the way with a wide range of affordable above-ground pools that will bring you lasting style and value to your backyard.



Canyon
ABOVE-GROUND POOL
Resin Serie

DEPL46_2021-09

Grayrok wall shown



Canyon

Our pool brings unique style and beauty to your yard with design-inspired walls. Urbain and Slate colored co-ordinated posts and top ledges add a graceful touch. This new Cornelius pool look complements any backyard, looks beautiful year after year and adds value to your lifestyle.

Our injected resin 8" ledges and 7" extruded resin uprights provides years of lasting beauty and quality. Unique interlocking resin caps, resin foot collars/connectors combo, injected resin top and bottom tracks with injected resin top connectors complete the look and adds strength for a pool that will last for summers to come.

The oval pool brings the ultimate in style to your yard with a fun, flexible shape. Added engineering means long life, easy care and more useable yard space. Available with traditional angle bracing (A-frame) or a space-saving Narrow Buttress System (NBS). Your pool installs easily.



Quality



Durable



Affordable



4/30 pro-rated
Warranty

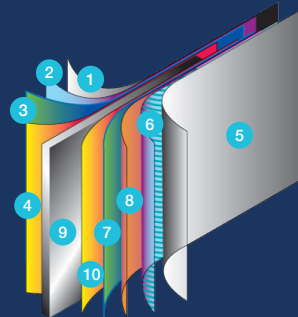


Exclusive oval
system

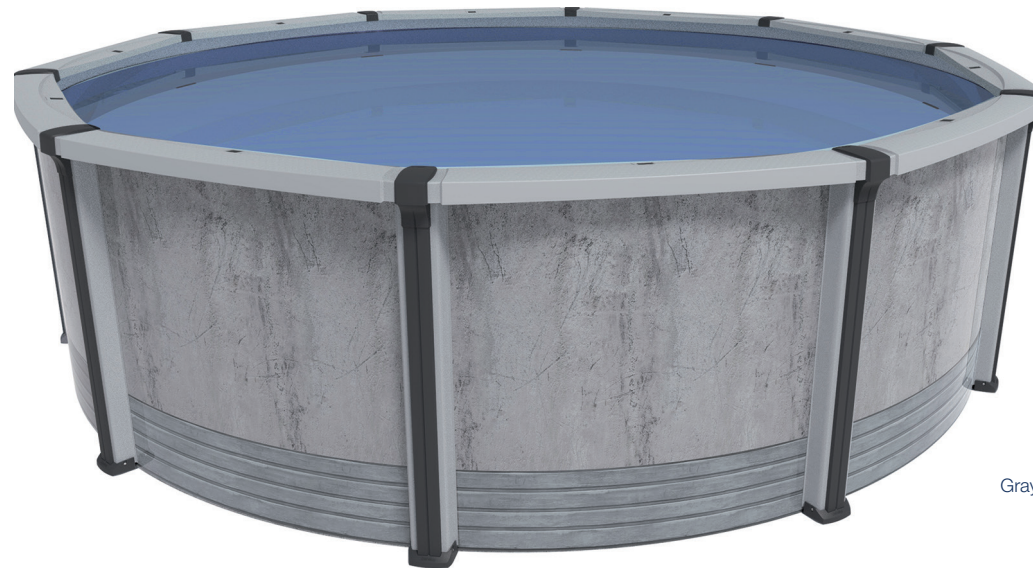


Design

Steel wall Components



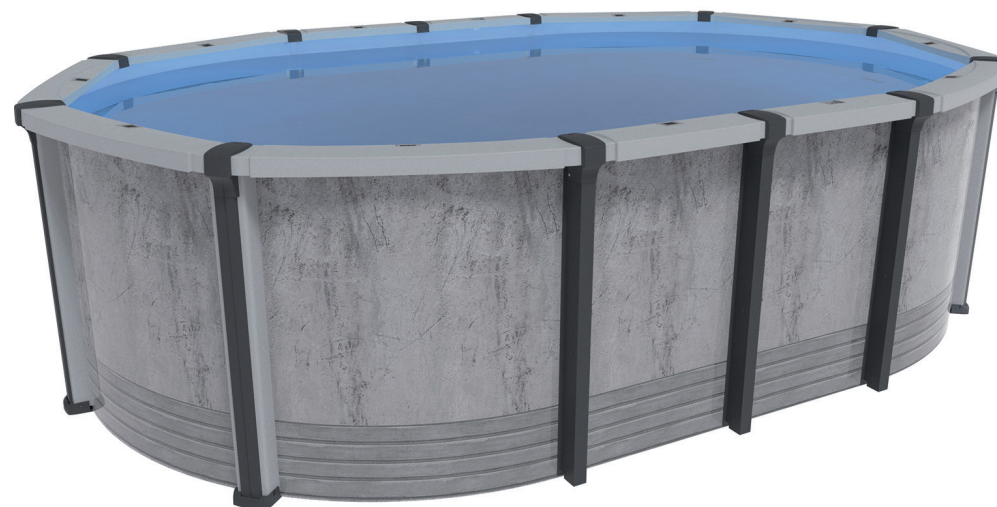
1. Plasticized SP coating
2. Molten zinc coat
3. Primer coat
4. Application of an alkaline solution to cleanse the oxides
5. Ultra-resistant polymer
6. Heat-hardened inlay
7. Primer coat
8. Chromate anti-rust coat
9. Steel wall core
10. Application of an alkaline solution to cleanse the oxides



Grayrok wall shown

Rounds | 52" & 54"

10' 12' 15' 18' 21' 24' 27' 30' 33'

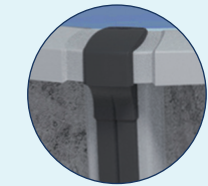


Grayrok wall shown

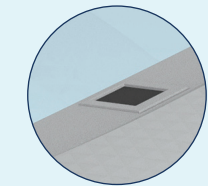
NBS Ovals | 52" & 54" // A-frame Ovals | 52"

10'x16' 10'x21' 13'x17' 13'x23' 15'x20' 15'x26' 15'x31' 18'x33' 18'x38' 18'x44'

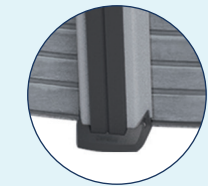
Technical Details



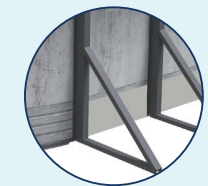
Ledges, caps and posts designed for a secure fit



Optional:
7 Colors Solar
Lights, integrated
into the top seats.



One piece resin
foot collars/
connectors combo



A-frame Ovals
heavy duty angle
braces system



CERTIFIED
Salt & ozone systems

